



HOCKADAY HOMES

Moments. Meaning. Connection.

2024

info@hockadayhomes.com
www.hockadayhomes.com

2127 VICTORIA CRES NW



A FULLY BUILT LUXURY
5 BEDROOM, 5.5 BATH,
3 CAR GARAGE HOME
FEATURING 4,680 SQ.FT.
OF TOTAL LIVING AREA

Located in Banff Trail just 10 mins from Downtown
Calgary and 5 mins from the University of Calgary,
Foothills Hospital and the Alberta Children's Hospital.



THE ENNERDALE

PRICE	BEDROOMS	BATHROOMS	GARAGE	INTERIOR
\$2,150,000	5	5.5	TRIPLE	4,680 SQFT

Welcome to the Ennerdale, a home that is perfectly designed to entertain large groups, but cozy enough for single family living in all stages of life. This exquisite 3-storey home features over 4,680 square feet of exceptional living space with five large bedrooms and five and a half full baths.

The sun-filled southern exposed open-to-above great room details a stunning stone fireplace, 17-foot ceilings and oversized windows which transitions to a well-equipped farmhouse style kitchen showcasing a unique quartzite waterfall island, custom cabinetry and integrated appliances. An elegant formal dining area which can accommodate a 12-person table separates the intimate living space and a large main floor office displaying charming floor to ceiling windows.

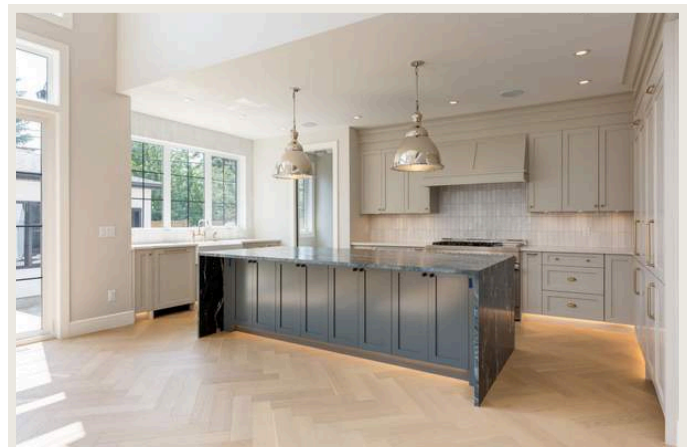
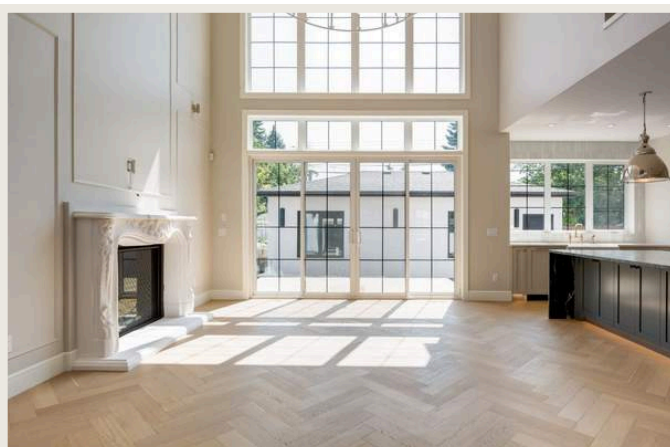
The second floor features 3 spacious bedrooms each with their own oversized closets and full bathrooms, a well-equipped laundry room and a study area looking down onto the tranquil living area.

The third floor is dedicated exclusively to the primary bedroom suite which traverses the length of the house and is entered through elegant French doors. This south-facing suite features an inviting fully tiled gas fireplace. Completing the owner's suite is a vast spa-like bathroom, a large custom dual shower head two-person steam shower, a free-standing tub, a separated commode, double vanities and an abundant walk-in closet.

The basement area is truly a "family cave". It boasts over 1,000 square feet of entertaining and recreational space featuring a fitness room with glass door entrance additional wall plugs for equipment and hardwood flooring. The theatre area is pre-wired for a projector with accommodation for a full surround sound system and just behind it a space large enough to accommodate a pool table beside a refreshment bar. It's the perfect floor for wellness and leisure.

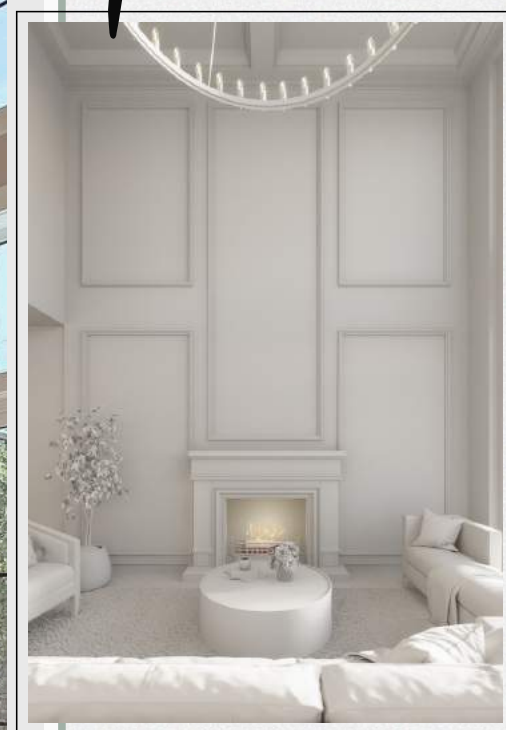
The interior of this home features a soft warm-tone palette and clean lines with impeccable finishes throughout. Lighting fixtures from Restoration Hardware, hardwood flooring supplied and installed by Divine Flooring and custom milled tile from world renowned Centura Tile.

The rear of the property extends out due to its pie shape nature allowing for the included triple car garage.





Living Room



RH

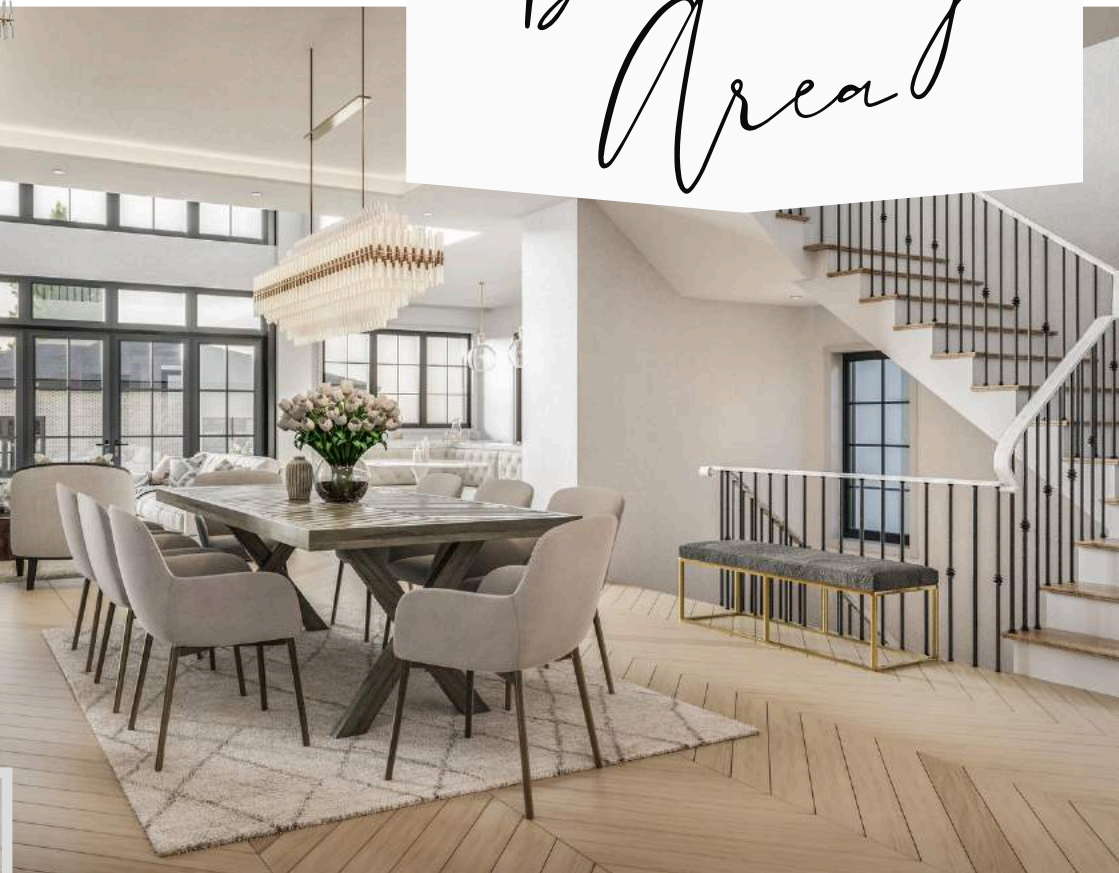
Dining Area

Banbury Lane

DESIGN CENTRE



CENTURA



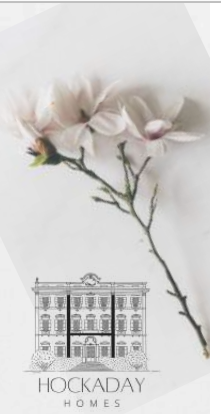
RH



Kitchen



BRIZO



HOCKADAY
HOMES

Office



DIVINE
FLOORING

Master Bedroom



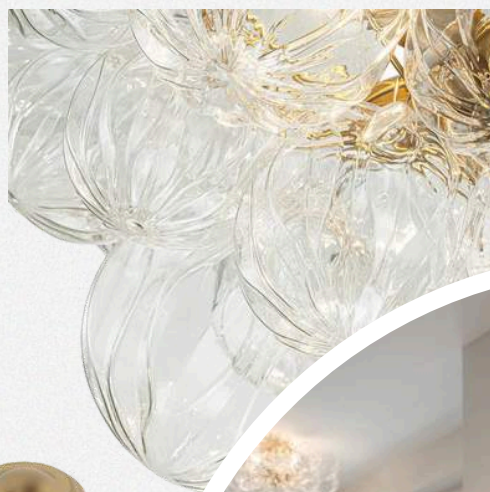
RH

DIVINE
FLOORING

Ensuite



CENTURA



RH



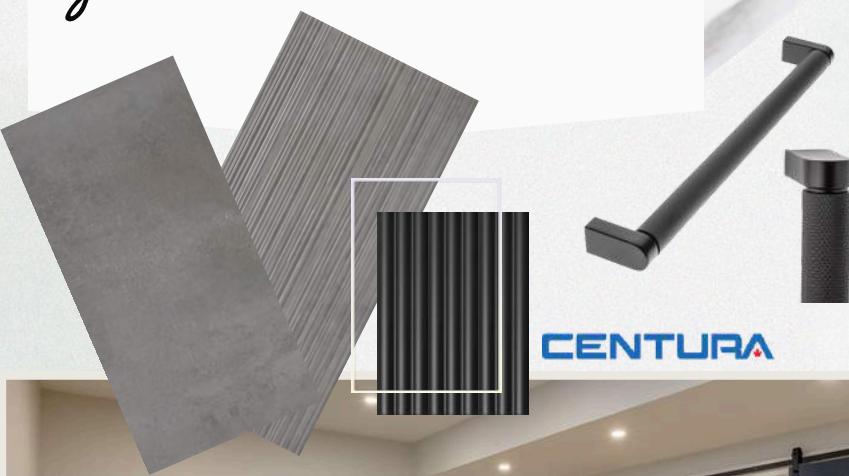
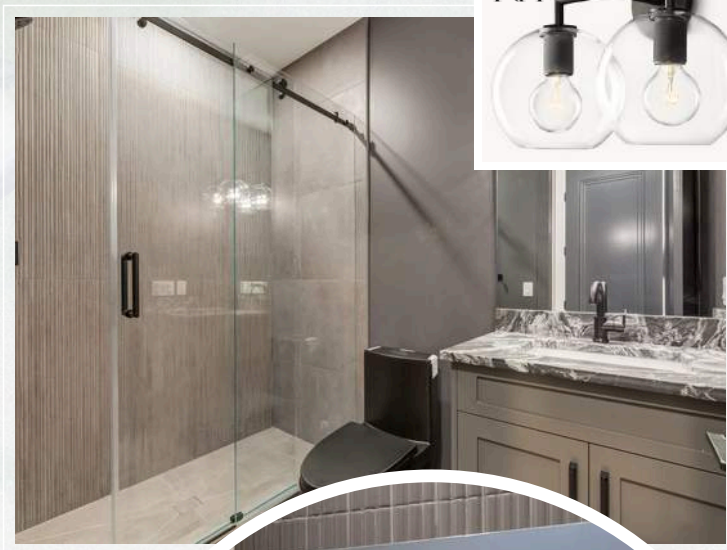
Laundry Room



CENTURA



Basement



CENTURA



RH

RESTORTATION HARDWARE
FIXTURES FEATURED IN THIS HOME

